

# FLUORIDE

Quarterly Journal of The International Society for Fluoride Research Inc.

www.fluorideresearch.org

www.fluorideresearch.com

www.fluorideresearch.net

Owned & published by THE INTERNATIONAL SOCIETY FOR FLUORIDE RESEARCH INCORPORATED © 2012. All rights reserved.

**Editor:**

Professor Emeritus Albert W Burgstahler. Lawrence, KS, USA. E-mail: awburg@ku.edu

**Associate Editors:**

Professor Dariusz Chlubek. Dept. of Biochemistry and Chemistry, Pomeranian Medical University, Szczecin, Poland.  
Associate Professor Hardy Limeback. University of Toronto, Toronto, ON, Canada.  
Professor Emeritus Gene W Miller. Utah State University, Logan, UT, USA.  
Christopher Neurath. American Environmental Health Studies Project, Lexington, MA, USA.  
Associate Professor Jashwanti D Sharma. Dept. of Zoology, University of Rajasthan, Jaipur, India.  
Professor Dianjun Sun. Chinese Research Center for Endemic Disease Control, Harbin Medical University, Harbin, China.  
Professor Emeritus AK Susheela, Fluorosis Research & Rural Development Foundation, Delhi, India.  
Associate Professor Masashi Tsunoda. Kitasato University School of Medicine, Sagamihara, Japan.  
Professor Emeritus Ming-Ho Yu. Western Washington University, Bellingham, WA, USA.

**Editorial Assistants:**

Bill Wilson. North Shore City, New Zealand.  
Peter Meiers. Saarbrücken, Germany.

**Managing Editor:**

Dr Bruce Spittle. Dunedin, New Zealand. E-mail: spittle@es.co.nz

---

## BOOK REVIEW EDITORIAL

- 1–4..... U KUNT MEER DAN U DENKT: AANVULLENDE MAATREGELEN OM KANKER TE HELPEN VOORKOMEN EN GENEZEN [YOU CAN ACCOMPLISH MORE THAN YOU THINK YOU CAN: SUPPLEMENTARY MEASURES TO HELP PREVENT AND HEAL CANCER] BY HANS MOOLENBURGH, SR.  
Peter Meiers. Saarbrücken, Germany.

## ANNOUNCEMENT

- 5–6..... SECOND ANNOUNCEMENT AND CALL FOR ABSTRACTS: XXXTH CONFERENCE OF THE INTERNATIONAL SOCIETY FOR FLUORIDE RESEARCH, ADVANCES IN FLUORIDE RESEARCH, SEPTEMBER 5–8, 2012. SZCZECIN, POLAND

## RESEARCH REPORTS

- 7–12..... ACUTE TOXICITY BIOASSAY AND BEHAVIOURAL RESPONSES INDUCED BY SODIUM FLUORIDE IN FRESHWATER FISH *PUNTIUS SOPHORE* (BLOCH)  
YS Narwaria, DN Saksena. Gwalior, Madhya Pradesh, India.
- 13–26..... MITIGATION BY BLACK TEA EXTRACT OF SODIUM FLUORIDE-INDUCED HISTOPATHOLOGICAL CHANGES IN BRAIN OF MICE  
MH Trivedi, RJ Verma, NP Sangai, NJ Chinoy,<sup>†</sup> Gujarat, India.
- 27–34..... CYTOPROTECTIVE EFFECT OF SILYMARIN AGAINST SODIUM FLUORIDE-INDUCED OXIDATIVE STRESS IN RAT ERYTHROCYTES  
Seyed Mohammad Nabavi, Seyed Fazel Nabavi, Monica Rosa Loizzo, Antoni Sureda, Mohammad Ali Amani, Akbar Hajizadeh Moghaddam.  
Tehran and Babolsar, Iran; Cosenza, Italy; and Illes Balears, Spain.
- 35–46..... TOXICITY OF FLUORIDE TO THE FRESHWATER MOLLUSC *DREISSENA POLYMORPHA*: EFFECTS ON SURVIVAL, HISTOLOGY, AND ANTIOXIDANT ENZYME ACTIVITY  
Sandra Casellato, Luciano Masiero, Lorian Ballarin. Padova, Italy.
- 47–52..... HIGH DIETARY FLUORINE INDUCTION OF OXIDATIVE DAMAGE IN THE CECAL TONSIL OF BROILERS  
Juan Liu, Hengmin Cui, Xi Peng, Jing Fang, Zhicai Zuo, Hesong Wang, Banguyan Wu, Yuanxin Deng, Kangping Wang. Ya'an, Sichuan, China.

---

<sup>†</sup>Deceased 8 May 2006.

Click on the blue rectangles for press quality pdf copies (larger file sizes and slower to load but better quality) and on the red rectangles for smallest file size pdf copies (smaller file sizes and faster to load but lower quality)

53–57..... DECREASED PERCENTAGES OF T-CELL SUBSETS AND IL-2 CONTENTS IN THE CECAL TONSIL OF BROILERS FED DIETS HIGH IN FLUORINE  
Juan Liu, Hengmin Cui, Xi Peng, Jing Fang, Zhicai Zuo, Hesong Wang, Bangyuan Wu, Yuanxin Deng, Kangping Wang. Ya'an, China.

58–64..... CRYOLITE INDUCED MORPHOLOGICAL CHANGE IN THE COMPOUND EYE OF *DROSOPHILA MELANOGASTER*  
Sayanti Podder, Shabana Akbari, Sumedha Roy. Burdwan, India.

### LETTER TO THE EDITOR

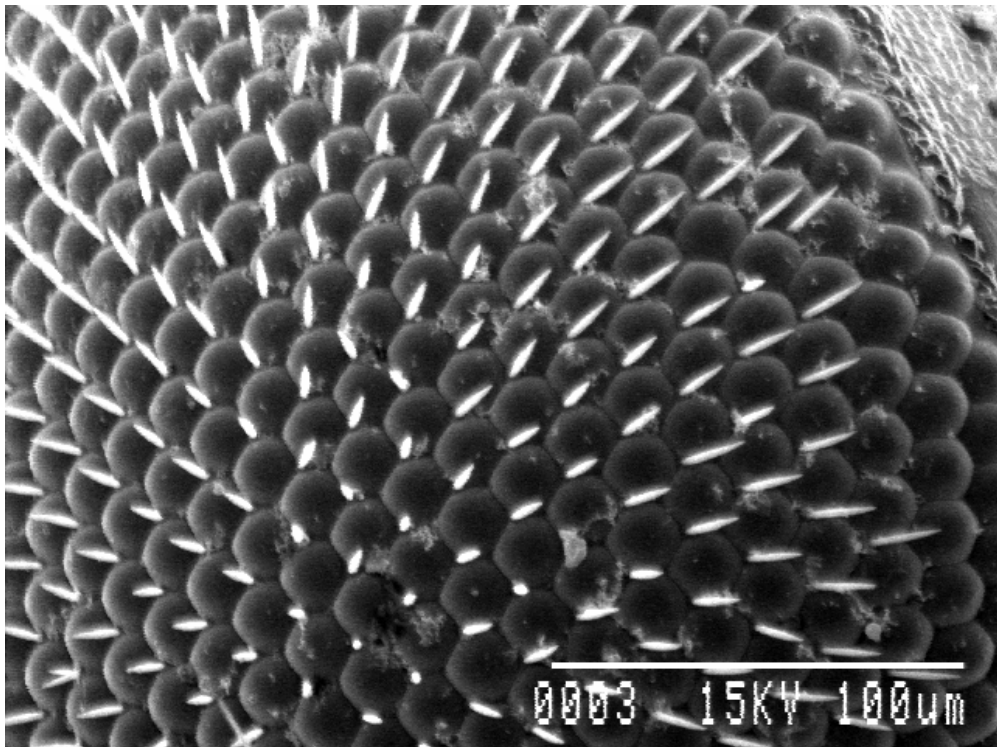
65–66..... COMMENT ON ACUTE EFFECTS OF NaF ON EARTHWORMS  
Cathy Justus. Pagosa Springs, CO, USA.

### SUBMITTING MANUSCRIPTS TO FLUORIDE

67–74..... GUIDELINES FOR AUTHORS—REVISED JANUARY-MARCH 2012

### CORRECTION

74..... FIRST ANNOUNCEMENT AND CALL FOR ABSTRACTS: XXXTH CONFERENCE OF THE INTERNATIONAL SOCIETY FOR FLUORIDE RESEARCH, ADVANCES IN FLUORIDE RESEARCH, SEPTEMBER 5–8, 2012, SZCZECIN, POLAND IN FLUORIDE 2011;44(4):183-7.



Scanning electron microscopy imaging at 300× magnification showing the normal, organized alignment of mechanosensory bristles along with properly arranged ommatidia in control adult *Drosophila melanogaster* fed a normal diet from larval hatching. From Cryolite induced morphological change in the compound eye of *Drosophila melanogaster* by Sayanti Podder, Shabana Akbari, and Sumedha Roy in this issue of *Fluoride*, p. 58–64.

## THE INTERNATIONAL SOCIETY FOR FLUORIDE RESEARCH INC.

The International Society for Fluoride Research was founded in 1966 at a meeting in Detroit of the American Society for Fluoride Research to promote the sharing of scientific information on all aspects of inorganic and organic fluorides. This is done by publication of the peer-reviewed quarterly journal *Fluoride* and sponsoring international conferences. The first ISFR conference was held in Frankfurt, Germany in 1967 and subsequent conferences have been held in Spain, Austria, the Netherlands, England, the United States of America, Switzerland, India, Japan, Hungary, China, Poland, New Zealand, and Canada.

The first announcement for the XXXth ISFR conference, to be hosted by Professor Dariusz Chlubek in Szczecin, Poland, on September 5–8, 2012, was published in *Fluoride* 2011;44(4):183-7. Further information is available on the conference website: <http://science24.com/event/isfr2012/> and in the second announcement on pages 5–6 of this issue of *Fluoride*. The XXXIst conference is planned for Chiang Mai, Thailand in 2014 with Dr Sunsanee Rajchagool the host, and the XXXIInd conference in 2016 is planned for Hyderabad, India, with Dr Arjun Khandare the host.

*Fluoride* is an open access journal available free on the internet at <http://www.fluorideresearch.org>, .com, and .net, in full text without an embargo period.

Subscription to *Fluoride* in hardcopy and attendance at the conferences are welcomed for all interested in fluoride research. *Bona fide* fluoride researchers are invited to apply for Membership in the ISFR.

The Society does not hold an official position on issues such as water fluoridation but encourages, through its conferences, and the publication of papers, commentaries, and letters to the editor, a critical examination of the scientific basis of the views which are held by individuals and organizations.

### MEMBERS OF THE ISFR INC. ADVISORY BOARD 2012

**President:**

Associate Professor Jashwanti D Sharma. Dept. of Zoology, University of Rajasthan, Jaipur, India

**First Vice President:**

Professor Dariusz Chlubek. Pomeranian Medical University, Szczecin, Poland.

**Second Vice President:**

Dr Sunsanee Rajchagool. Director of Intercountry Centre for Oral Health, WHO Collaborating Centre for Promoting Community-based Oral Health, Chiang Mai, Thailand.

**Co-Secretaries:**

Professor Dariusz Chlubek. Pomeranian Medical University, Szczecin, Poland.  
Associate Professor Masashi Tsunoda. Kitasato University School of Medicine, Sagamihara, Japan.

**Editor of *Fluoride*:**

Professor Emeritus Albert W Burgstahler. University of Kansas, Lawrence, KS, USA.

**Members at Large:**

**Asia**

Professor Koichi Kono. Osaka Medical College, Osaka, Japan.  
Professor Emeritus AK Susheela. Fluorosis Research & Rural Development Foundation, Delhi, India.  
Professor Guifan Sun. China Medical University, Shenyang, China.  
Professor Emeritus Humio Tsunoda. Iwate Medical University, Morioka, Japan.

## Europe

Professor Miklós Bély. Hungarian Academy of Science, Budapest, Hungary.  
Professor Jürgen Franke. Rehaklinik an der Salza, Bad Langensalza, Germany.  
Professor Emeritus Zygmunt Machoy. Pomeranian Medical Academy, Szczecin, Poland.  
Professor Jörg Spitz. Society for Medical Information and Prevention, Wiesbaden, Germany.

## North America

Professor Emeritus Gene W Miller. Utah State University, Logan, UT, USA.

## Treasurer and Managing Editor of *Fluoride*:

Dr Bruce Spittle. Dunedin, New Zealand.

## MEMBERS OF THE ISFR INC. EDITORIAL BOARD 2012

### Editor of *Fluoride*:

Professor Emeritus Albert W Burgstahler. University of Kansas, Lawrence, KS, USA

### Associate Editors:

Professor Dariusz Chlubek. Dept of Biochemistry & Chemistry, Pomeranian Medical University, Szczecin, Poland.  
Professor Hardy Limeback. University of Toronto, Toronto, ON, Canada.  
Professor Emeritus Gene W Miller. Utah State University, Logan, UT, USA.  
Christopher Neurath. American Environmental Health Studies Project, Canton, NY, USA.  
Associate Professor Jashwanti D Sharma. Dept. of Zoology, University of Rajasthan, Jaipur, India.  
Professor Dianjun Sun. Chinese Research Center for Endemic Disease Control, Harbin Medical University, Harbin, PR China.  
Professor Emeritus AK Susheela. Fluorosis Research & Rural Development Foundation, Delhi, India.  
Associate Professor Masashi Tsunoda. Kitasato University School of Medicine, Sagamihara, Japan.  
Professor Emeritus Ming-Ho Yu. Western Washington University, Bellingham, WA, USA.

### Editorial Board Members:

Dr Miklos Bély. Hungarian Academy of Science, Budapest, Hungary.  
Dr Russell L Blaylock. Ridgeland, Mississippi, USA.  
Associate Professor Andrzej Bohatyrewicz. Dept. of Orthopedics & Traumatology, Pomeranian Medical University, Szczecin, Poland.  
Professor Masahiko Chikuma. Osaka University of Pharmaceutical Sciences, Osaka, Japan.  
Professor Edward Czerwinski. Jagiellonian University, Kraków, Poland.  
Dr Mark Diesendorf. Sustainability Centre, Box 521, Epping, NSW 1710, Australia.  
Professor J Franke. Rehaklinik an der Salza, Bad Langensalza, Germany.  
Assistant Professor Toshitaka Horiuchi. Nihon University School of Dentistry at Matsudo, Japan.  
Associate Professor Kazuyoshi Itai. Iwate Medical University, Morioka, Iwate, Japan.  
Professor K Kono. Osaka Medical College, Osaka, Japan.  
Professor Jerzy Krechniak. Medical University, Gdańsk, Poland.  
Professor Emeritus C James Lovelace. Humbolt State University, Arcata, CA, USA.  
Dr Boguslaw Machaliński. Pomeranian Academy of Medicine, Szczecin, Poland.  
Professor Emeritus Zygmunt Machoy. Pomeranian Medical Academy, Szczecin, Poland.  
Professor F Murray. Murdoch University, Murdoch, WA, Australia.  
Professor Masayuki Okazaki. Hiroshima University, Hiroshima, Japan.  
Dr James C Pushnik. California State University, Chico, CA, USA.  
Professor Masashi Shimahara. Osaka Medical College, Takatsuki City, Osaka, Japan.  
Professor Jörg Spitz. Society for Medical Information and Prevention, Wiesbaden, Germany.  
Professor Anna Strunecká. Charles University, Prague, Czech Republic.  
Professor Guifan Sun. China Medical University, Shenyang, China.  
Professor Satoshi Takizawa. Dept. of Urban Engineering, Graduate School of Engineering, University of Tokyo.  
Professor Emeritus SPS Teotia. Institute of Higher Medical Sciences, Whitefield, India.  
Professor Emeritus Humio Tsunoda. Iwate Medical University, Morioka, Japan.  
Professor Jundong Wang. College of Animal Science & Veterinary Medicine, Shanxi Agricultural University, Taigu, Shanxi, PR China.  
Professor Emeritus Zan-Dao Wei. Guiyang Medical College, Guizhou, China.  
Professor Emeritus Y Yoshida. Osaka Medical College, Osaka, Japan.  
Professor Emeritus NBK Yoshitake. Shiga University of Medical Science, Otsu, Japan.  
Professor Boasham Zheng., Institute of Geochemistry, Chinese Academy of Sciences, Guiyang, Guizhou, PR China.

### Editorial Assistants:

Bill Wilson. North Shore City, New Zealand.  
Peter Meiers. Saarbrücken, Germany.

### Managing Editor:

Dr Bruce Spittle. Dunedin, New Zealand.

**FLUORIDE QUARTERLY JOURNAL OF THE INTERNATIONAL SOCIETY FOR FLUORIDE RESEARCH INC.**

ISSN 0015-4725, is published four times a year (January-March, April-June, July-September, and October-December), and contains peer-reviewed scientific reports on agricultural, analytical, biochemical, biological, chemical, clinical, dental, ecological, environmental, industrial, medical, metabolic, pharmacological, synergistic, toxicological, and veterinary aspects of inorganic and organic fluorides. Publication is usually made towards the end of each quarterly period rather than at the start of the period. The journal does not contain advertising.

*Copyright.* *Fluoride* is owned and published by the International Society for Fluoride Research. © 2012. All rights reserved.

*Online access:* *Fluoride* is an open access journal available without an embargo period and with free full text at: [www.fluorideresearch.org](http://www.fluorideresearch.org), [www.fluorideresearch.com](http://www.fluorideresearch.com), and [www.fluorideresearch.net](http://www.fluorideresearch.net). Further details are given below in the section on past issues. Articles in *Fluoride* can be searched for using the Google custom search on the website by inserting, in the white box, appropriate key words such as author names, subject key words, and dates, and clicking on the search box. The results can be cleared by clicking on the × to the right of the search box. The search engine covers all articles on the website including the 35-year Cumulative Author and Subject Indexes and subsequent annual indexes. *Fluoride* is also covered by the Chemical Abstracts search engine *SciFinder Scholar* (from Chemical Abstracts Service) and *Web of Science* (from Thomson Corporation for Science Citation Index), but not, at present, through *Medline/PubMed*.

*Subscription to Fluoride in hard copy* for 2012, is available for an annual fee, payable annually in advance, of: US\$51, Canadian\$53, £33, Japan¥4500, €39, Australian\$57, or New Zealand\$72, with a discount of 10% for copies posted to a New Zealand address, which incurs a lower postal cost. No subscription agency discount is available. Payment may be made in any of the currencies above. No journals will be mailed until payment is received for the current subscription or membership period. Apply to Dr Spittle, Managing Editor *Fluoride*, 727 Brighton Road, Dunedin 9035, New Zealand. E-mail: [spittle@es.co.nz](mailto:spittle@es.co.nz). Please indicate if you would like the subscription to start with the calendar year or with a particular issue of the journal. Invoices are sent to subscribers with the last issue of each year, apart from those whose copies are ordered through a subscription agency.

*Payment options* for subscription to *Fluoride*, and the purchase of back issues are: bank transfer, cheque, cash, or PayPal. Bank transfers can be made to The Bank of New Zealand, New Lynn Branch, 3029 Great North Road, New Lynn, Auckland, New Zealand; Swift BKNZNZ22; Website: [www.bnz.co.nz](http://www.bnz.co.nz); Fax 64 09 827 6806; Account name: International Society for Fluoride Research; Account number 02 0184 0333239 000. Cheques should be made out to the same or to ISFR. Personal cheques, bank cheques or drafts, and cash may be posted to Dr Bruce Spittle, 727 Brighton Road, Ocean View, Dunedin 9035, New Zealand. Personal or bank cheques, and cash, in US\$, Canadian\$, £, €, Australian\$, and NZ\$ are fine. Cash as Japanese Yen is also fine. Please do not send Canadian or British Postal Notes, cheques drawn on Japanese banks, or cheques in US\$ drawn on British banks in the United Kingdom as they cannot be negotiated in New Zealand. PayPal allows payment by Visa or Mastercard directly to an E-mail address in a secure way. It is necessary to first register with PayPal at <http://paypal.com>. The recipient E-mail address for the payment is [spittle@es.co.nz](mailto:spittle@es.co.nz). Just giving the credit card number to the ISFR is not sufficient.

*Copies of articles and previous issues of Fluoride:* Hard copies of all of the previous issues of *Fluoride*, including the 35-year cumulative indexes in *Fluoride* 2002;35(4-Parts 1 and 2), are usually kept in stock and may be ordered directly through the Managing Editor for US\$10 or equivalent per single copy of an issue or part of *Fluoride* including postage. Individual articles can also be downloaded, free in full text, from the ISFR websites at: [www.fluorideresearch.org](http://www.fluorideresearch.org), [www.fluorideresearch.com](http://www.fluorideresearch.com), and [www.fluorideresearch.net](http://www.fluorideresearch.net). Copies of the First and Second International Workshops on Fluorosis Prevention and Defluoridation of Water in Tanzania, 1995,

and Ethiopia, 1997, are also available for US\$12 and US\$15 respectively including postage. Further details of these publications are in *Fluoride* 2002;35(3):150-2.

*Instructions to authors:* Manuscripts, including reports of original research, papers presented at ISFR conferences, research reviews, discussion papers, and letters to the Editor, are accepted for publication after appropriate evaluation and recommendation by qualified reviewers. The initial version of the manuscript, double-spaced throughout with wide margins, should be submitted, as a Word attachment by E-mail, to:

Professor Emeritus AW Burgstahler  
Editor, *Fluoride*  
1620 Massachusetts Street  
Lawrence, KS 66044-4254, USA.  
E-mail: awburg@ku.edu).

Do not send manuscripts to the Managing Editor. If submission is by post, please send two copies, without a computer disc. Detailed instructions for preparing papers are at [www.fluorideresearch.org](http://www.fluorideresearch.org) and in *Fluoride* 2012;45(1):67-74. **These instructions should be followed meticulously to avoid publication delays.**

The Editorial Officers of *Fluoride* strongly support the maintenance of the highest standards of animal care and the control of discomforts to animals in research. Authors must indicate whether their institutional and national guidelines for the care and use of laboratory animals were followed. When reporting experiments on human subjects, authors should indicate whether the procedures followed were in accordance with the ethical standards of the responsible committee on human experimentation (institutional and national) and with the Helsinki Declaration of 1975, as revised in 2000 (World Medical Association Declaration of Helsinki: ethical principles for medical research involving human subjects. *JAMA* 2000 Dec 20;284(23):3043-5).

*Complimentary copies:* Donors wishing to fund gift copies, which will be suitably inscribed, are invited to contact Dr Spittle.

*Membership of the International Society for Fluoride Research Inc.:* Membership in the ISFR Inc. is invited from *bona fide* fluoride researchers. Membership allows participating in the activities of the Society and voting at business meetings. No membership fee is payable. Application for membership may be made by letter to Dr Spittle, E-mail: [spittle@es.co.nz](mailto:spittle@es.co.nz), including name, postal address, E-mail address, and the area of fluoride research the applicant is involved in.

*Co-secretaries:* Enquiries about ISFR Inc. membership, ISFR Inc. conferences and meetings, and other matters under their jurisdiction may be made to the co-secretaries:

Professor Dariusz Chlubek. Department of Biochemistry and Chemistry, Pomeranian Medical University, al. Powstancow Wlkp. 72, 70-111 Szczecin, Poland. E-mail: [dclubek@pam.szczecin.pl](mailto:dclubek@pam.szczecin.pl)

Associate Professor Masashi Tsunoda, Department of Preventive Medicine and Public Health, Kitasato University School of Medicine, Kitasato 1-15-1, Sagami-hara, Kanagawa, 228-8555, Japan. E-mail: [mtsunoda@med.kitasato-u.ac.jp](mailto:mtsunoda@med.kitasato-u.ac.jp)